

Gibraltar 2022 SFCR Review: Additional Exhibits

Alex Marcuson



Summary table

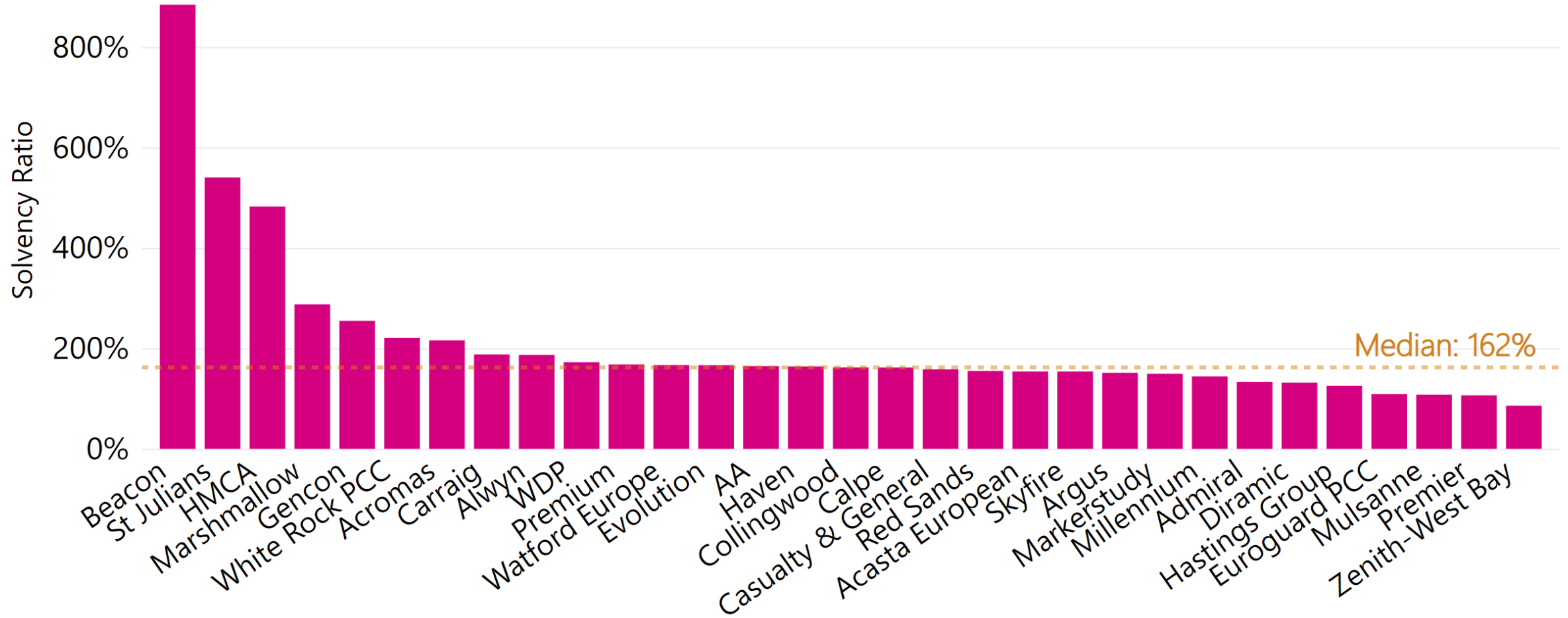


Live and run-off Insurers	2022	2021	2020	2019	2018	2017
Total GWP, £bn	6.8	6.3	5.7	5.1	5.1	4.8
Total NWP, £bn	2.1	1.9	1.8	1.6	1.6	1.7
Total Gross SII TPs, £bn	8.6	7.8	7.3	7.2	6.9	5.6
Total Net SII TPs, £bn	2.9	2.8	2.7	2.4	2.4	2.3
Solvency Ratio - Range	86%-884%	86%-776%	111%-695%	83%-580%	102%-446%	25%-431%
Solvency Ratio - Mean	208%	219%	229%	204%	174%	170%
Solvency Ratio - Median	162%	175%	178%	160%	148%	146%
SCR below 110%	4	3	0	3	5	7
EOF to NWP ratio	98%	111%	114%	108%	102%	102%
Aggregate SCR, £bn	1.5	1.4	1.2	1.1	1.2	1.1
Aggregate EOF, £bn	2.1	2.1	2.1	1.7	1.7	1.7
Aggregate Solvency Ratio	139%	153%	170%	155%	145%	149%

Solvency Ratio



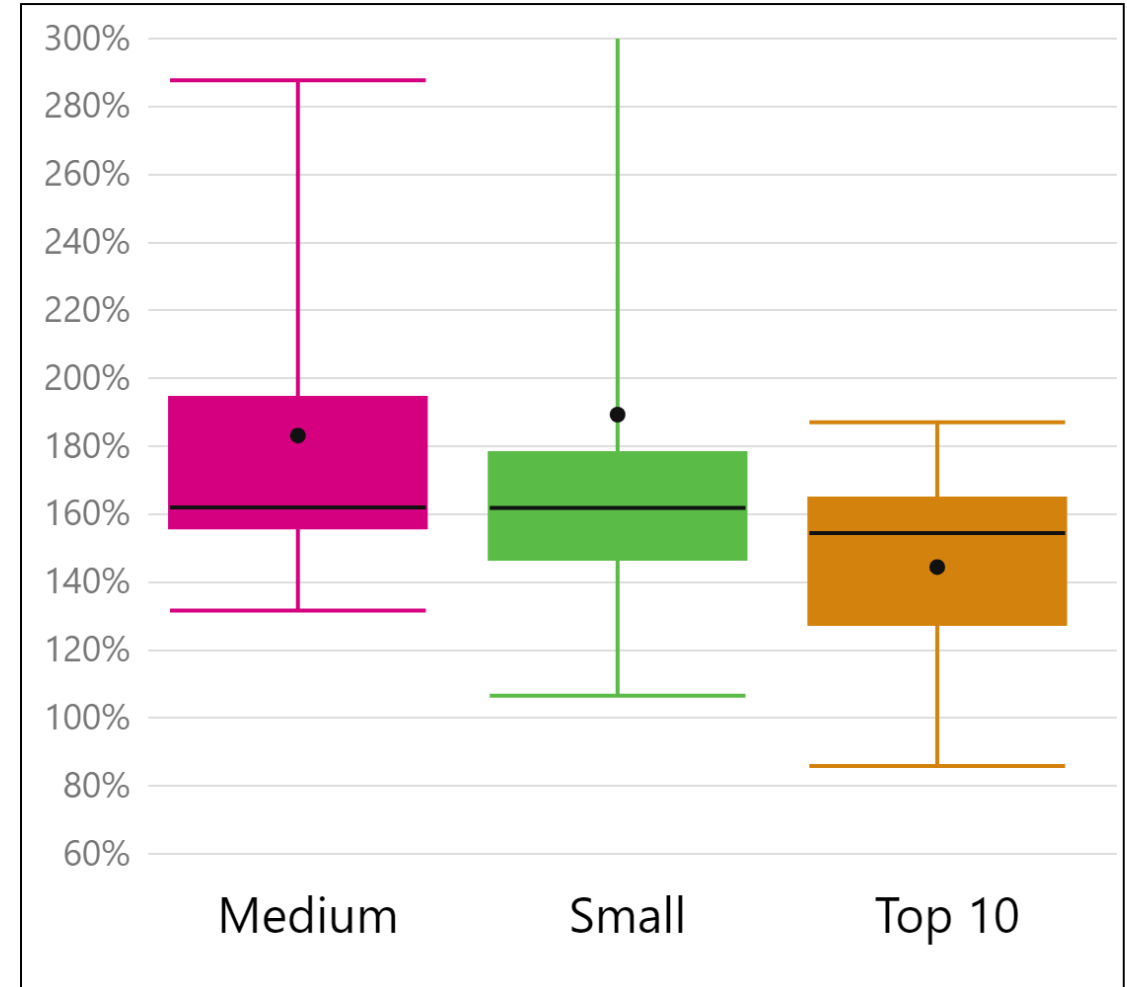
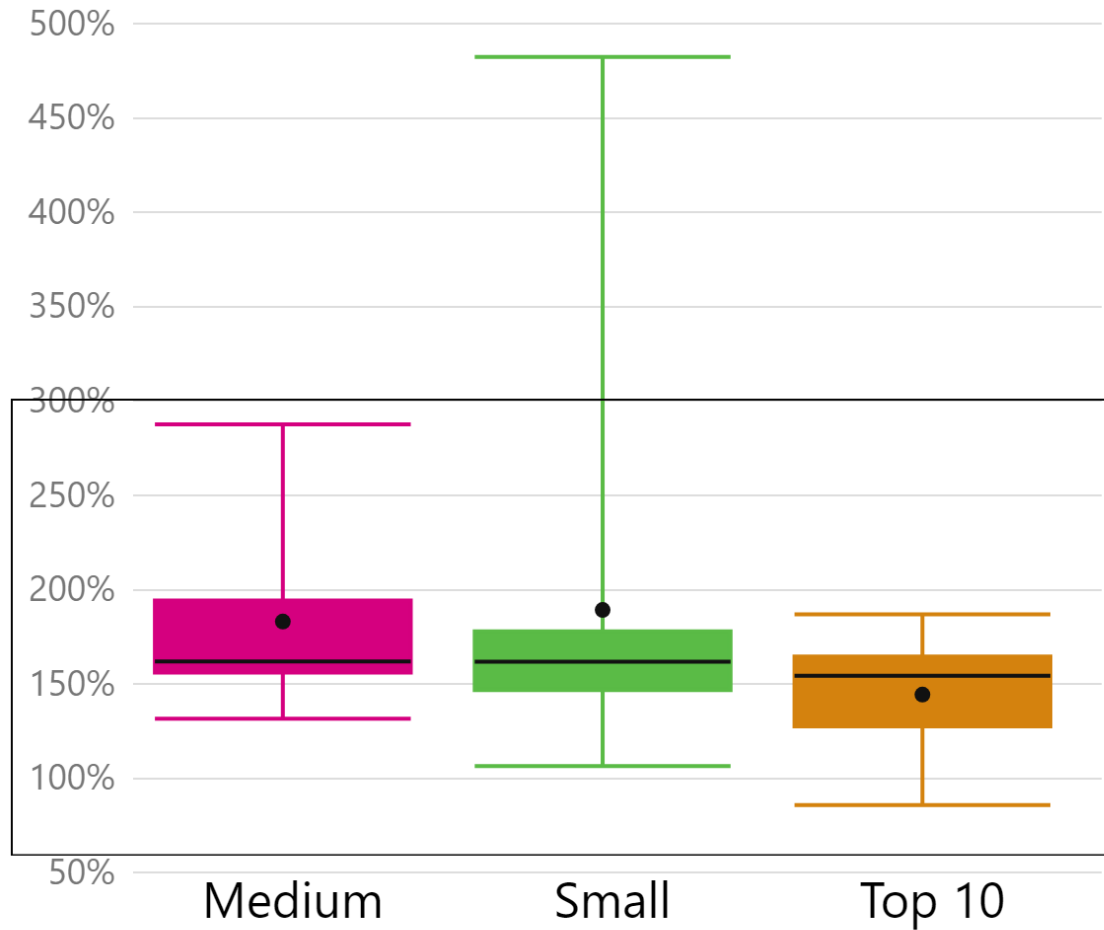
Solvency Ratio - Gibraltar 2022



Solvency Ratio by Size of Insurer



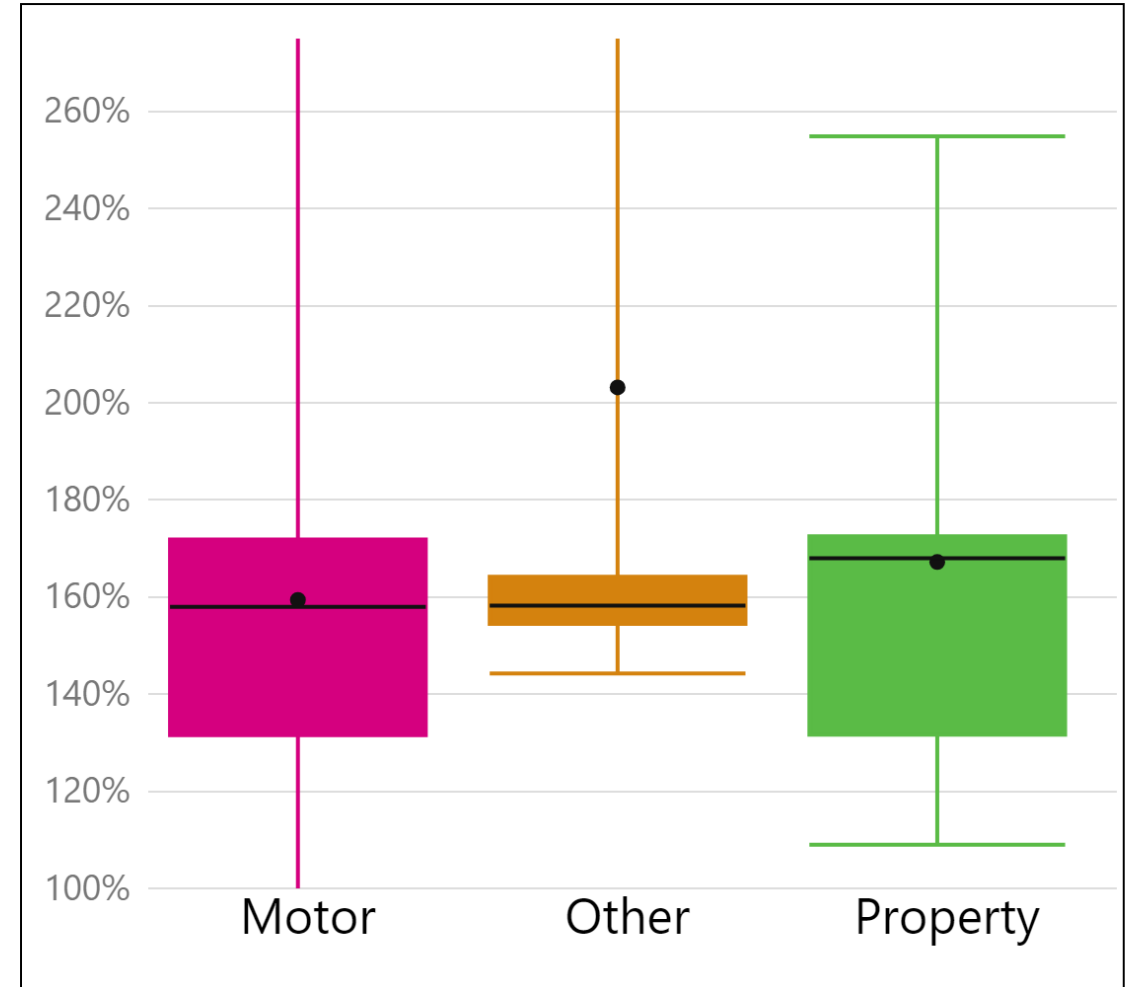
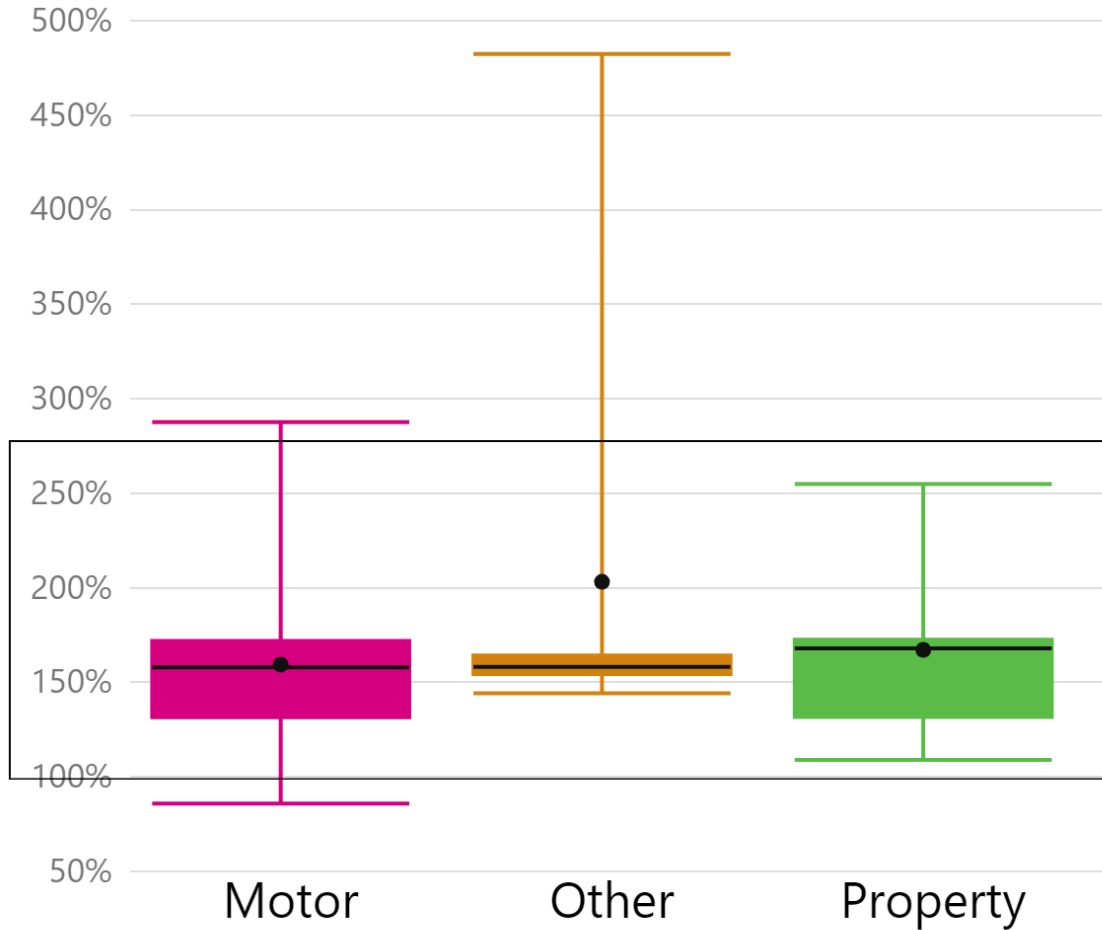
Gibraltar 2022 - Solvency Ratios by size



Solvency Ratio by Insurer Type



Ratio of EOF to SCR by Class - Gibraltar 2022

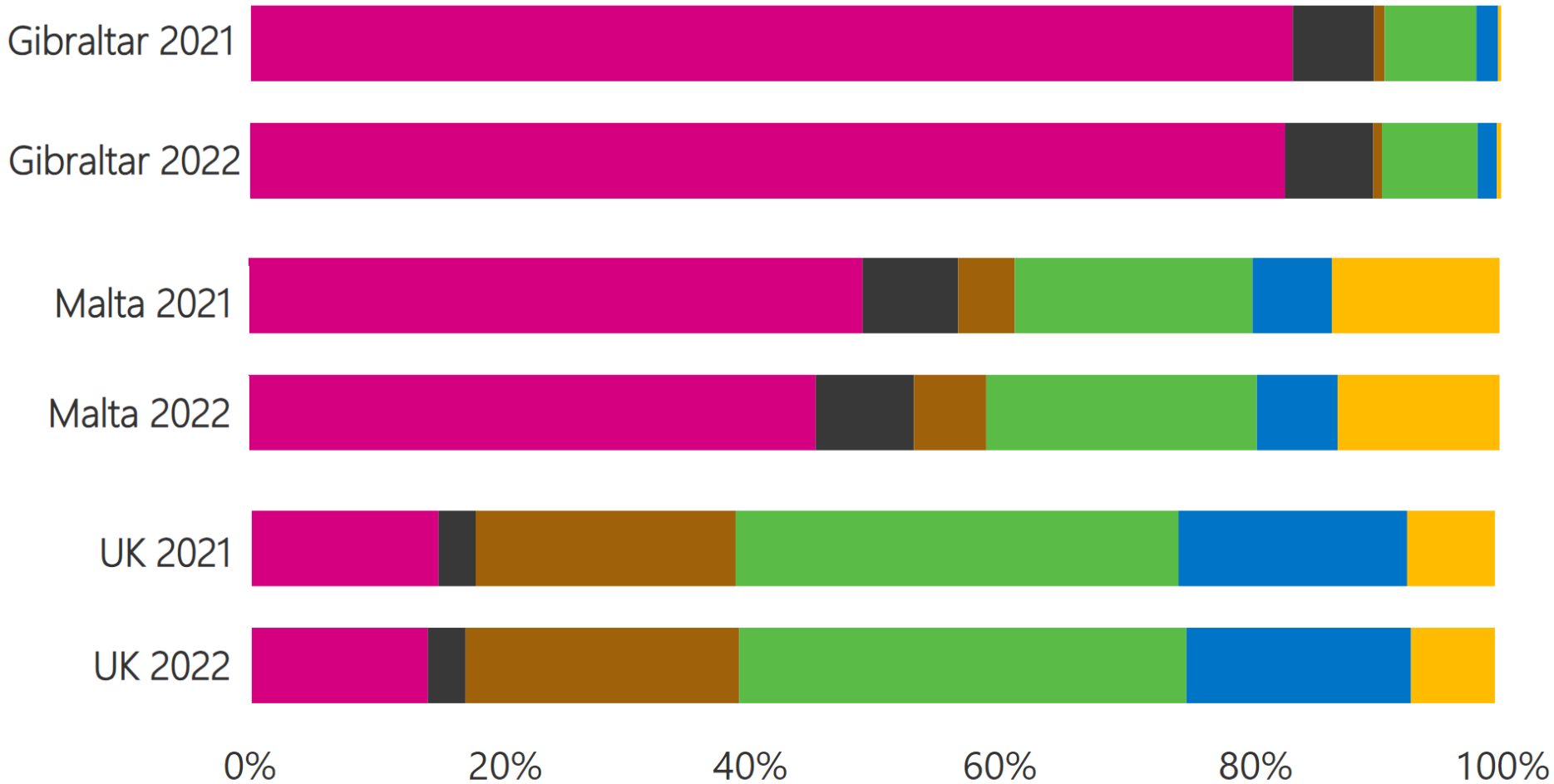


Gibraltar vs Malta vs UK



GWP split by Class of Business - 2021 and 2022

- GWP Line of Business**
- Motor
 - Misc. Financial Loss
 - General Liability
 - Property
 - Other
 - Medical Expense



Solvency Ratio by Country - top 10



Solvency Ratio by Country (Top 10) - 2022

